

# WHEN YOU NEED UNIVERSAL SOLUTIONS

pure material  
**100% nylon**  
\*\*\*

**100% secure  
fixing**

**NEW!**

**POLISH  
PRODUCER**

# sfx

- 1** Increased collar diameter  
- prevents the plug from slipping into the substrate.
- 2** Special anti-rotation fins  
- prevent rotation in the substrate during installation.
- 3** Unique shape  
- ensures a 'knot' is formed, which makes the plug sit firmly in the void.
- 4** Reduced diameter of the tapered section of the plug facilitates installation.
- 5** Special ribs  
- a new solution which holds the sleeve firmly in place



[www.wkret-met.com/sfx](http://www.wkret-met.com/sfx)

**Child's play!**  
**For all substrates!**

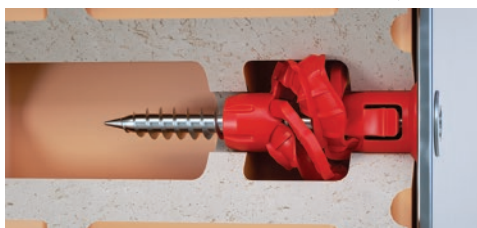


Unique geometry of the expansion/torsion zone ensures secure fixing in all types of substrate: **solid materials, materials with voids, plasterboards, concrete panels, plywood.**

Special expansion ribs ensure **the plug is held firmly in place in members of at least 10 mm thick** and prevent its rotation. The same is achieved in solid materials thanks to expansion elements along the plug.

Internal geometry of the plug eliminates faulty screw installation by guiding the screw precisely down the plug. Increased collar diameter prevents the plug from sinking too deep into the substrate and the reduced diameter of the tapered plug facilitates installation in the pilot hole.

### MATERIALS WITH VOIDS (e.g. hollow clay brick)



### SOLID MATERIALS (e.g. concrete, aerated concrete)



### PLASTERBOARD



### Incorrect installation in plasterboard

#### Sleeve failure - competitor's product



#### Sleeve failure - competitor's product



# SFXP

Universal plug Ø5, Ø6, Ø8, Ø10 with countersunk head screw



AT-15-9702/2016

## Description

Countersunk head screw for fixing of light duty interior finish systems and lightweight installations - plug sleeve made of nylon

## Technical data

Type of installation pre-fastening installation

Substrate concrete, solid clay brick, perforated solid brick, calcium silicate brick, autoclaved aerated concrete, plasterboards, concrete panels

## Sleeve material/protective coating

100%  
nylon

Blue  
zinc

## Features and advantages of the product



**Reduced diameter of the bottom part**  
- facilitates installation in the drill hole.



**Special ribs**  
- a new solution which holds the sleeve firmly in place.



**Unique shape**  
- ensures a 'knot' is formed, which makes the plug sit firmly in the void.



**Increased collar diameter**  
- prevents the plug from sinking into the substrate.



**Special anti-rotation fins**  
- prevent rotation in the substrate during installation.

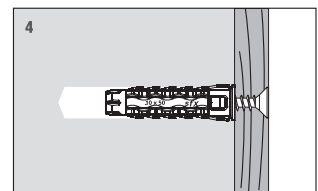
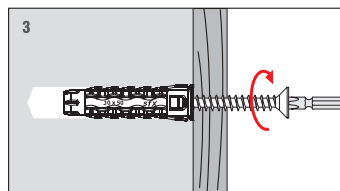
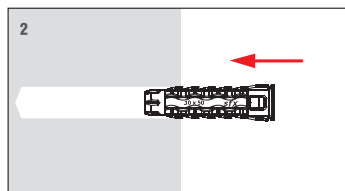
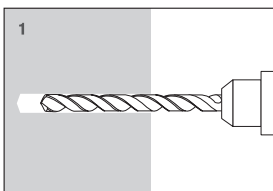
NEW!



100%  
nylon  
\*\*\*



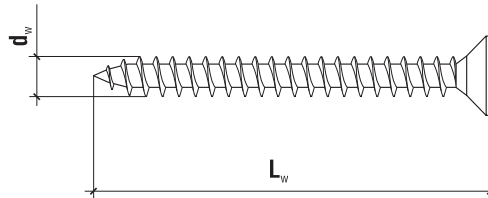
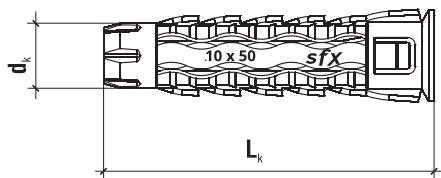
## Installation



### TECHNICAL DATA

Product marking

<b>SFXP</b>	<b>05</b>	<b>025</b>	<b>035</b>
Type	Diameter	Length	Screw length

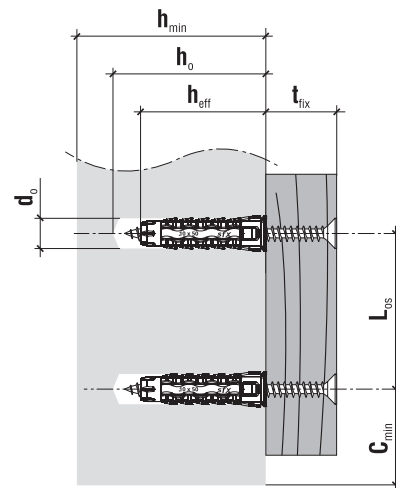


PZ-2  
PZ-3

	Code	$d_k \times L_k$ [mm]	$d_w \times L_w$ [mm]	Max. fixture thickness $t_{fix}$ [mm]	PZ	Pcs
<b>Ø5</b>	SFXP-05025035	5.0 x 25	3.5 x 35	10	PZ-2	200
	SFXP-05025045	5.0 x 25	3.5 x 45	15	PZ-2	200
<b>Ø6</b>	SFXP-06030040	6.0 x 30	4.0 x 40	10	PZ-2	100
	SFXP-06030050	6.0 x 30	4.0 x 50	20	PZ-2	100
<b>Ø8</b>	SFXP-08040050	8.0 x 40	5.0 x 50	10	PZ-2	100
	SFXP-08040060	8.0 x 40	5.0 x 60	20	PZ-2	100
<b>Ø10</b>	SFXP-10050060	10 x 50	6.0 x 60	10	PZ-3	50
	SFXP-10050070	10 x 50	6.0 x 70	20	PZ-3	50
	SFXP-10060070	10 x 60	6.0 x 70	10	PZ-3	50
	SFXP-10060080	10 x 60	6.0 x 80	20	PZ-3	50

### TECHNICAL DATA

Parameter	Unit	Value
Plug diameter	$d_k$ [mm]	5, 6, 8, 10
Hole/drill diameter	$d_o$ [mm]	5, 6, 8, 10
Effective anchorage depth	$h_{eff}$ [mm]	25, 30, 40, 50, 60
Depth of drill hole	$h_o$ [mm]	35, 40, 50, 60, 70
Drive type	x	PZ
Sleeve material	x	PA
Screw material	x	Zinc plated steel
Approval	x	AT-15-9702/2016



### DESIGN PULL-OUT RESISTANCE [kN]

Substrate	SFXP				
	Ø5	Ø6	Ø8	Ø10x50	Ø10x60
Normal weight concrete class C20/25 ÷ C50/60	0.05	0.11	0.17	0.42	0.42
Solid clay brick MZ class 20	0.04	0.12	0.30	0.48	0.48
Calcium silicate brick KS class 20	0.04	0.12	0.36	0.60	0.60
Calcium silicate hollow blocks (perforated) class 15	0.04	0.12	0.24	0.48	0.48
Hollow clay brick class 15	0.04	0.20	0.24	0.48	0.48
Autoclaved aerated concrete PP6 600/4	0.05	0.15	0.30	0.30	0.30
Plasterboards 12.5 mm	-	0.10	0.10	0.20	0.20
Fibreboard 12.5 mm	-	0.10	0.10	0.15	0.15
Plasterboards 2 x 12.5 mm	-	-	-	-	0.45

# SFXK Universal plug Ø10 with hex head screw



AT-15-9702/2016

## Description

Hex head screw for fixing of light duty interior finish systems and lightweight installations - plug sleeve made of nylon

## Technical data

Type of installation pre-fastening installation

Substrate concrete, solid clay brick, perforated solid brick, calcium silicate brick, autoclaved aerated concrete, plasterboards, concrete panels

## Sleeve material/protective coating

100%  
nylon

Blue  
zinc

## Features and advantages of the product



**Reduced diameter of the bottom part**  
- facilitates installation in the drill hole.



**Special ribs**  
- a new solution which holds the sleeve firmly in place.



**Unique shape**  
- ensures a 'knot' is formed, which makes the plug sit firmly in the void.



**Increased collar diameter**  
- prevents the plug from sinking into the substrate.



**Special anti-rotation fins**  
- prevent rotation in the substrate during installation.

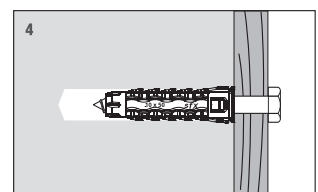
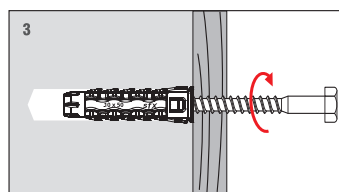
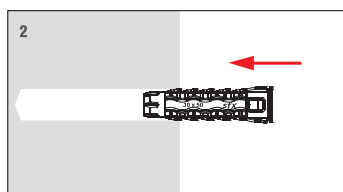
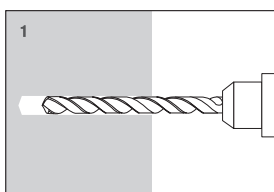
**NEW!**



100% pure material  
nylon \*\*\*



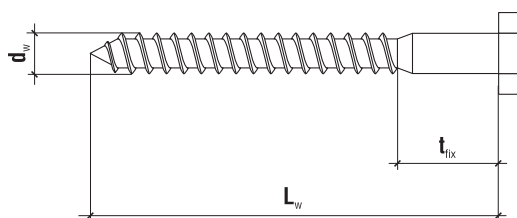
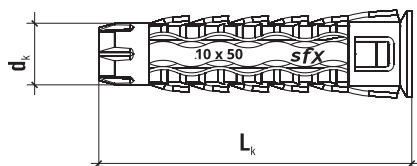
## Installation



### TECHNICAL DATA

Product marking

<b>SFXK</b>	<b>10</b>	<b>050</b>	<b>060</b>
Type	Diameter	Length	Screw length



SW 10

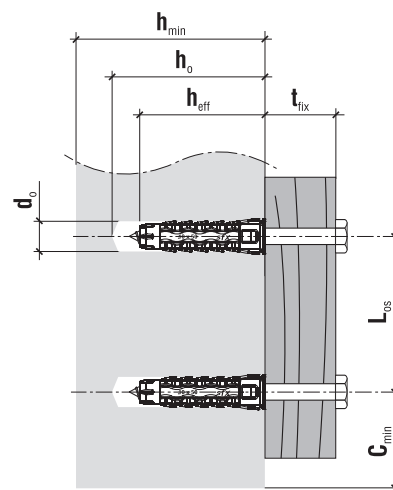
	Code	$d_k \times L_k$ [mm]	$d_w \times L_w$ [mm]	Max. fixture thickness $t_{fix}$ [mm]	SW	Pcs
<b>Ø10</b>	<b>SFXK-10050060</b>	10 x 50	6.0 x 60	10	SW-10	25
	<b>SFXK-10050070</b>	10 x 50	6.0 x 70	20	SW-10	25
	<b>SFXK-10060070</b>	10 x 60	6.0 x 70	10	SW-10	25
	<b>SFXK-10060080</b>	10 x 60	6.0 x 80	20	SW-10	25

### TECHNICAL DATA

Parameter	Unit	Value
Plug diameter	$d_k$ [mm]	10
Hole/drill diameter	$d_o$ [mm]	10
Effective anchorage depth	$h_{eff}$ [mm]	50, 60
Depth of drill hole	$h_o$ [mm]	60, 70
Drive type	x	SW-10
Sleeve material	x	PA
Screw material	x	Zinc plated steel
Approval	x	<b>AT-15-9702/2016</b>

### DESIGN PULL-OUT RESISTANCE [kN]

Substrate	SFXK	
	Ø10x50	Ø10x60
Normal weight concrete class C20/25 ÷ C50/60	0.67	0.67
Solid clay brick MZ class 20	0.60	0.60
Calcium silicate brick KS class 20	0.60	0.60
Calcium silicate hollow blocks (perforated) class 15	0.36	0.36
Hollow clay brick class 15	0.36	0.36
Autoclaved aerated concrete PP6 600/4	0.75	0.75
Plasterboards 12.5 mm	0.20	0.20
Fibreboard 12.5 mm	0.20	0.20
Plasterboards 2 x 12.5 mm	-	0.45



**SFXL** Universal plug Ø6, Ø8 with straight hook

**SFXC** Universal plug Ø6, Ø8 with round hook

**SFXO** Universal plug Ø6, Ø8 with eye-bolt



AT-15-9702/2016

**NEW!**



100% pure material nylon \*\*\*



Description

Steel zinc coated hooks for lightweight interior finish elements and lightweight installations - sleeve made of nylon

Technical data

Type of installation pre-fastening installation

Substrate concrete, solid clay brick, perforated solid brick, calcium silicate brick, autoclaved aerated concrete, plasterboards, concrete panels

Sleeve material/protective coating



Features and advantages of the product



**Reduced diameter of the bottom part**  
- facilitates installation in the drill hole.



**Special ribs**  
- a new solution which holds the sleeve firmly in place.

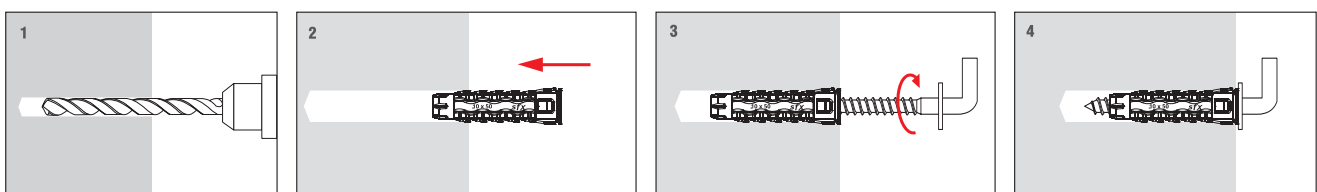


**Unique shape**  
- ensures a 'knot' is formed, which makes the plug sit firmly in the void.



**Increased collar diameter**  
- prevents the plug from sinking into the substrate.

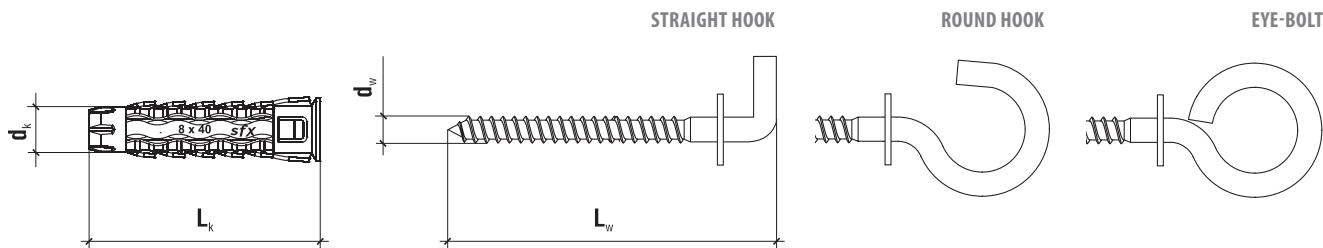
Installation



### TECHNICAL DATA

Product marking

<b>SFXL</b>	<b>SFXX</b>	<b>SFXO</b>	<b>06</b>	<b>030</b>	<b>064</b>
Type	Type	Type	Diameter	Length	Hook length



Code	$d_k \times L_k$ [mm]	$d_w \times L_w$ [mm]	Pcs
<b>Code STRAIGHT HOOK</b>			
<b>Ø6</b> SFXL-06030048	6.0 x 30	3.5 x 48	50
<b>Ø8</b> SFXL-08040065	8.0 x 40	4.5 x 65	25
<b>Code ROUND HOOK</b>			
<b>Ø6</b> SFXX-06030065	6.0 x 30	3.5 x 65	50
<b>Ø8</b> SFXX-08040083	8.0 x 40	4.5 x 83	25
<b>Code EYE-BOLT</b>			
<b>Ø6</b> SFXO-06030064	6.0 x 30	3.5 x 64	50
<b>Ø8</b> SFXO-08040085	8.0 x 40	4.5 x 85	25

### TECHNICAL DATA

Parameter	Unit	Value
Plug diameter	$d_k$ [mm]	6/8
Hole/drill diameter	$d_o$ [mm]	6/8
Effective anchorage depth	$h_{eff}$ [mm]	30/40
Depth of drill hole	$h_o$ [mm]	40/50
Drive type	x	-
Sleeve material	x	PA
Screw material	x	Zinc plated steel
Approval	x	AT-15-9702/2016

### DESIGN PULL-OUT RESISTANCE [KN]

Substrate	Ø6	Ø8
Normal weight concrete class C20/25 - C50/60	0.11	0.17
Solid clay brick MZ class 20	0.16	0.24
Calcium silicate brick KS class 20	0.16	0.24
Calcium silicate hollow blocks (perforated) class 15	0.16	0.24
Hollow clay brick class 15	0.16	0.24
Autoclaved aerated concrete PP6 600/4	0.20	0.30
Plasterboards 12.5 mm	0.10	0.10
Fibreboard 12.5 mm	0.10	0.10

