

FRAME PLUGS Ø10

KPR-FAST 10 K



TX HEX HEAD SCREW

KPS-FAST 10 S



TX COUNTERSUNK HEAD SCREW



100% ^{pure material} nylon

100% secure fixing

REDUCED THREAD
- precise installation of the screw
- increased expansion force in the second expansion zone



length upto 300 mm



ETAG 020
A B C D



KPS-FAST 10 S

Frame plug Ø10 with countersunk head screw
ZINC PLATED SCREW

KPS-FAST 10 S A4

Frame plug Ø10 with countersunk head screw
A4 STEEL SCREW

KPS-FAST 10 S 00

Frame plug Ø10 with countersunk head screw
HOT-DIP GALVANIZED SCREW



ETA-12/0272

Description

Frame plug with countersunk head screw for fixing of wood and wood-based members

Technical data

Type of installation	push-through installation
Substrate	concrete, solid clay brick, perforated clay brick, autoclaved aerated concrete

Sleeve material / Protective coating



Features and advantages of the product



Screw length

We manufacture screws up to 300 mm long



Countersunk head with TX-40 drive

Countersunk head ensures the right embedment in the element being installed. TX drive ensures optimum transfer of torque.



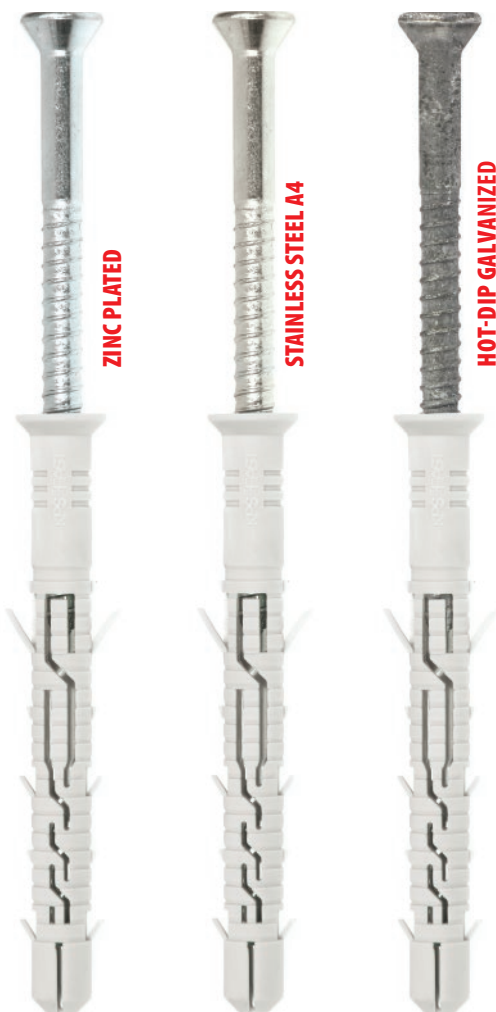
Reduced thread

Precise installation of the screw
Increased expansion force in the second expansion zone.

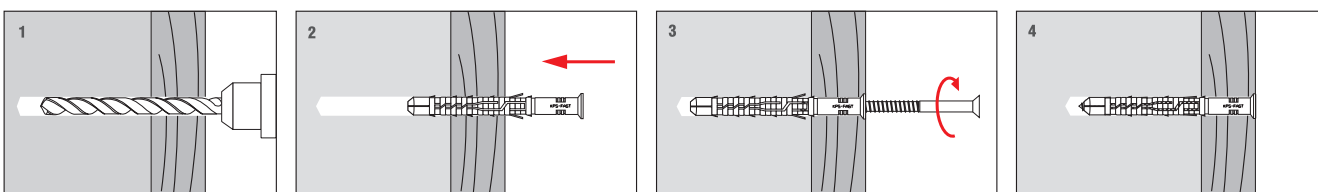


Resistance to fire

For assembling facade systems the fastener has a sufficient fire resistance of at least 90 minutes (R90) if the permissible design load for a single anchorage $N_r \leq 0.8$ kN (without permanent longitudinal axial load).



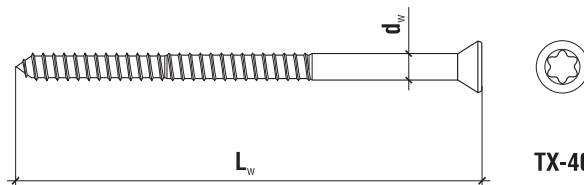
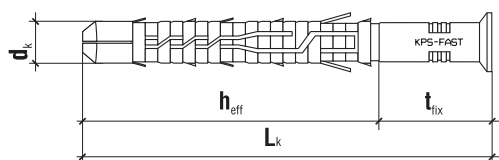
Installation



TECHNICAL DATA

Product marking

KPS-FAST	10	080	S	00
Type	Diameter	Length	Head type	Type of steel and coating

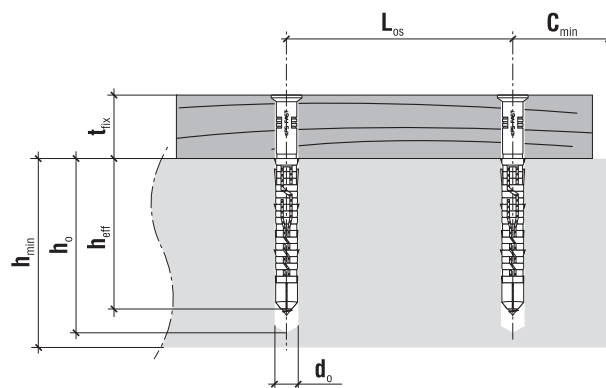


TX-40

Ø10	Code BLUE ZINC PLATED	Code A4 STAINLESS STEEL	Code HOT-DIP GALVANIZED	$d_k \times L_k$ [mm]	$d_w \times L_w$ [mm]	Max. fixture thickness t_{fix} [mm]	Drive type	Pcs
	KPS-FAST-10080S	KPS-FAST-10080S-A4	KPS-FAST-10080S-00	10 x 80	7.0 x 85	10	TX-40	50
	KPS-FAST-10100S	KPS-FAST-10100S-A4	KPS-FAST-10100S-00	10 x 100	7.0 x 105	30	TX-40	50
	KPS-FAST-10120S	KPS-FAST-10120S-A4	KPS-FAST-10120S-00	10 x 120	7.0 x 125	50	TX-40	50
	KPS-FAST-10140S	KPS-FAST-10140S-A4	KPS-FAST-10140S-00	10 x 140	7.0 x 145	70	TX-40	50
	KPS-FAST-10160S	KPS-FAST-10160S-A4	KPS-FAST-10160S-00	10 x 160	7.0 x 165	90	TX-40	50
	KPS-FAST-10180S	KPS-FAST-10180S-A4	KPS-FAST-10180S-00	10 x 180	7.0 x 185	110	TX-40	50
	KPS-FAST-10200S	KPS-FAST-10200S-A4	KPS-FAST-10200S-00	10 x 200	7.0 x 205	130	TX-40	25
	KPS-FAST-10230S	KPS-FAST-10230S-A4	KPS-FAST-10230S-00	10 x 230	7.0 x 235	160	TX-40	25
	KPS-FAST-10260S	KPS-FAST-10260S-A4	KPS-FAST-10260S-00	10 x 260	7.0 x 265	190	TX-40	25
	KPS-FAST-10300S	KPS-FAST-10300S-A4	KPS-FAST-10300S-00	10 x 300	7.0 x 305	230	TX-40	25
	MADE TO ORDER		MADE TO ORDER					

TECHNICAL DATA

Parameter	Unit	Value
Plug diameter	d_k [mm]	10
Hole diameter	d_o [mm]	10
Effective anchorage depth	h_{eff} [mm]	70
Depth of drill hole	h_o [mm]	80
Drive type	x	TX-40
Use categories	x	A B C D
Sleeve material	x	PA
Screw material	x	A4, hot-dip galvanized, steel
Approval	x	ETA-12/0272



SUBSTRATE - MINIMUM THICKNESS, DISTANCE

Substrate	Min. member thickness h_{min} [mm]	Min. edge distance c_{min} [mm]
Concrete \geq C16/20	100	60
Solid clay brick	120	100
Solid sand-lime brick	120	100
Perforated clay brick	180	100
Autoclaved aerated concrete	100	100

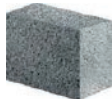










From now all our framework fasteners Fast and Strong are **PRE-ASSEMBLED**.

Pre-assembled products means:

- ✓ easier and faster mounting
- ✓ no wasting time for assembling
- ✓ no mistake in choosing sleeve to the screw

RESISTANCE **KPR-FAST-10 K / KPS-FAST-10 S**

Type of substrate according to ETAG020	Description	Density [kg/dm ³]	Standard	Characteristic pull-out resistance [kN]	
				KPR-FAST 10 K	KPS-FAST 10 S
A	 Concrete C 12/15	≥ 1.8	EN 206-1	3.0*	
	Concrete ≥C 16/20	≥ 2.3	EN 206-1	4.0*	
B	 Solid clay brick	≥ 1.7	EN 771-1	3.5	
	Solid clay brick (e.g. MZ Rd 2.0/20)-DIN 106)	≥ 2.0	EN 771-1	3.5	
B	 Solid sand-lime brick (e.g. Kalksandstein KS NF 20-2.0 Vollstein - DIN 106)	≥ 2.0	EN 771-2	3.5	
C	 Hollow sand-lime blocks KSL (e.g. Kalksandstein KS L-R(P) 8 DF Lochstein - DIN 106)	≥ 1.6	EN 771-2	2.5	
C	 Porous blocks (e.g. Porotherm 25 P+W)	≥ 0.8	EN 771-1	0.9	
C	 Hollow clay brick (e.g. MAX 250)	≥ 0.8	EN 771-1	0.9	
C	 Vertically perforated clay brick (e.g. Hlz Rd1 1.2/12)	≥ 1.2	EN 771-1	2.0	
D	 Lightweight concrete hollow blocks (e.g. HBL 2/0.8)	≥ 0.8	EN 771-3	1.5	
D	 Autoclaved aerated concrete AAC2	≥ 0.35	EN 771-4	0.6	
	Autoclaved aerated concrete AAC7	≥ 0.65	EN 771-4	1.5	

* cracked concrete