

**KPR** Frame plug - nylon Ø8



Description

Plastic expansion plug for use with screw

Technical data

Type of installation push-through installation

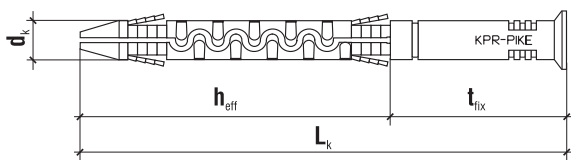
Sleeve material

**100%  
nylon**

Features and advantages of the product

**Sleeves without screws**

For use with screws with a diameter of 6.0 mm



Product marking

<b>KPR</b>	<b>08</b>	<b>065</b>
Type	Diameter	Length

	Code	$d_k \times L_k$ [mm]	Recommended screw diameter $d_w$	Effective anchorage depth $h_{eff}$ [mm]	Min. depth of drilled hole $h_0$ [mm]	Pcs
<b>Ø08</b>	<b>KPR-08065</b>	8.0 x 65	6	60	70	100
	<b>KPR-08080</b>	8.0 x 80	6	60	70	100
	<b>KPR-08100</b>	8.0 x 100	6	60	70	100
	<b>KPR-08120</b>	8.0 x 120	6	60	70	100
	<b>KPR-08140</b>	8.0 x 140	6	60	70	100

no technical approval, to be used with screws of 6 mm in diameter