

# KPR-16

Frame plug Ø16 for heavy duty applications - nylon



100% nylon

### Description

Plastic expansion plug for use with screw

### Technical data

Type of installation push-through installation

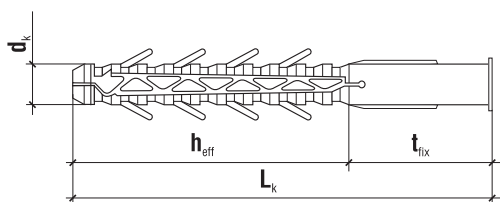
### Sleeve material

100% nylon

### Features and advantages of the product

#### Sleeves without screws

For use with screws with a diameter of 12.0 mm



### Product marking

<b>KPR</b>	<b>16</b>	<b>140</b>
Type	Diameter	Length

	Code	$d_k \times L_k$ [mm]	Recommended screw diameter $d_w$	Effective anchorage depth $h_{eff}$ [mm]	Min. depth of drilled hole $h_o$ [mm]	Pcs
<b>Ø16</b>	KPR-16140	16 x 140	12	120	130	25
	KPR-16160	16 x 160	12	120	130	25
	KPR-16200	16 x 200	12	120	130	25
	KPR-16240	16 x 240	12	120	130	25

no technical approval, to be used with screws of 12 mm in diameter