

SFXP

Universal plug Ø5, Ø6, Ø8, Ø10 with countersunk head screw



AT-15-9702/2016

Description

Countersunk head screw for fixing of light duty interior finish systems and lightweight installations - plug sleeve made of nylon

Technical data

Type of installation pre-fastening installation

Substrate concrete, solid clay brick, perforated solid brick, calcium silicate brick, autoclaved aerated concrete, plasterboards, concrete panels

Sleeve material/protective coating

100%
nylon

Blue
zinc

Features and advantages of the product



Reduced diameter of the bottom part
- facilitates installation in the drill hole.



Special ribs
- a new solution which holds the sleeve firmly in place.



Unique shape
- ensures a 'knot' is formed, which makes the plug sit firmly in the void.



Increased collar diameter
- prevents the plug from sinking into the substrate.



Special anti-rotation fins
- prevent rotation in the substrate during installation.

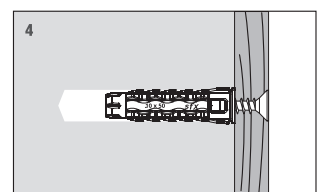
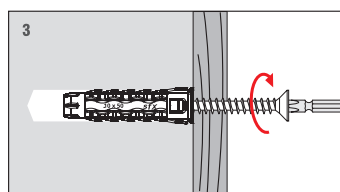
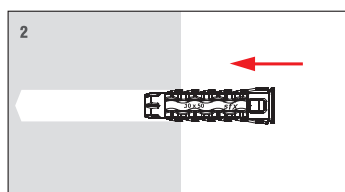
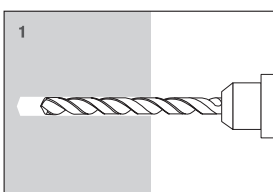
NEW!



100%
nylon



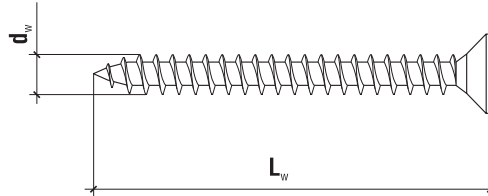
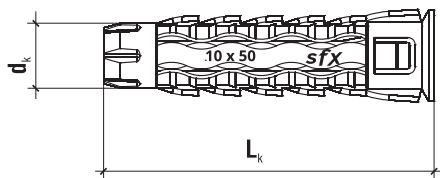
Installation



TECHNICAL DATA

Product marking

SFXP	05	025	035
Type	Diameter	Length	Screw length

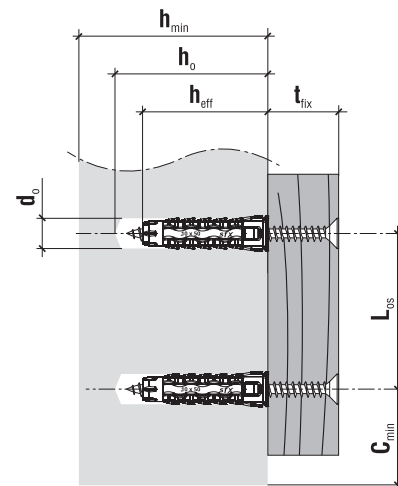


PZ-2
PZ-3

	Code	$d_k \times L_k$ [mm]	$d_w \times L_w$ [mm]	Max. fixture thickness t_{fix} [mm]	PZ	Pcs
Ø5	SFXP-05025035	5.0 x 25	3.5 x 35	10	PZ-2	200
	SFXP-05025045	5.0 x 25	3.5 x 45	15	PZ-2	200
Ø6	SFXP-06030040	6.0 x 30	4.0 x 40	10	PZ-2	100
	SFXP-06030050	6.0 x 30	4.0 x 50	20	PZ-2	100
Ø8	SFXP-08040050	8.0 x 40	5.0 x 50	10	PZ-2	100
	SFXP-08040060	8.0 x 40	5.0 x 60	20	PZ-2	100
Ø10	SFXP-10050060	10 x 50	6.0 x 60	10	PZ-3	50
	SFXP-10050070	10 x 50	6.0 x 70	20	PZ-3	50
	SFXP-10060070	10 x 60	6.0 x 70	10	PZ-3	50
	SFXP-10060080	10 x 60	6.0 x 80	20	PZ-3	50

TECHNICAL DATA

Parameter	Unit	Value
Plug diameter	d_k [mm]	5, 6, 8, 10
Hole/drill diameter	d_o [mm]	5, 6, 8, 10
Effective anchorage depth	h_{eff} [mm]	25, 30, 40, 50, 60
Depth of drill hole	h_o [mm]	35, 40, 50, 60, 70
Drive type	x	PZ
Sleeve material	x	PA
Screw material	x	Zinc plated steel
Approval	x	AT-15-9702/2016



DESIGN PULL-OUT RESISTANCE [kN]

Substrate	SFXP				
	Ø5	Ø6	Ø8	Ø10x50	Ø10x60
Normal weight concrete class C20/25 ÷ C50/60	0.05	0.11	0.17	0.42	0.42
Solid clay brick MZ class 20	0.04	0.12	0.30	0.48	0.48
Calcium silicate brick KS class 20	0.04	0.12	0.36	0.60	0.60
Calcium silicate hollow blocks (perforated) class 15	0.04	0.12	0.24	0.48	0.48
Hollow clay brick class 15	0.04	0.20	0.24	0.48	0.48
Autoclaved aerated concrete PP6 600/4	0.05	0.15	0.30	0.30	0.30
Plasterboards 12.5 mm	-	0.10	0.10	0.20	0.20
Fibreboard 12.5 mm	-	0.10	0.10	0.15	0.15
Plasterboards 2 x 12.5 mm	-	-	-	-	0.45